

This document will describe the use of VNC on PBX in a Flash. No warranties express or implied.

NOTE THIS IS A WORK IN PROGRESS PLEASE LET ME KNOW IF YOU FIND ANY ERRORS.

This work is Copyright 2007 © by Thomas A. King. This work may not be altered or modified without express written permission of the author. You may copy this manual and use it freely; however this notice must be included with the document. This manual is NOT released under the GNU General Public License.

OVERVIEW

VNC is a remote control program that redirects Screen, Keyboard, and Mouse input/output to a remote location. Think of it as a virtual extension cord. Why would we use VNC? There are many times when a Linux box is located in a remote location and the user has no physical access to it. In this case you would be limited to using the CLI via SSH. Running VNC allows you to remotely run the GUI on Linux and have a desktop on your local machine. There are two components to VNC; the server and the client.

METHODOLOGY

In order for vnc to function your Linux box must have 2 components installed on it; Xwindows/Kde and VNC server. If you installed Xwindows/KDE using the PBX in a Flash script then both of these criteria have been met. You will also need another computer which has internet access and a client copy of VNC installed. I recommend UltraVNC if you are using Windows XP and it can be found at <http://ultravnc.sourceforge.net/>. There are excellent instructions on how to install this program on their website.

PREPARING VNC-SERVER TO RUN

You need to modify a configuration file on your Linux box in order to successfully connect to it from another machine. Please perform the following steps:

1. Log into the CLI (Command Line Interface) as user root
2. Type `cd /root` and then tap the ENTER key
3. Type `vncserver` and then tap the ENTER key
4. You need to enter a password. Use something other than the root password. Note connections to VNC are not encrypted so your password can be at risk. If in doubt run VNC through an encrypted tunnel using a program such as HAMACHI.
5. You will need to enter the same password again

6. After a short pause the CLI will appear again
7. Type `cd /root/.vnc` and then tap the ENTER key
8. type `nano xstartup` and then tap the ENTER key
9. Edit the file so it looks similar to the one below

```
#!/bin/sh

# Uncomment the following two lines for normal desktop:
unset SESSION_MANAGER
exec /etc/X11/xinit/xinitrc

[ -x /etc/vnc/xstartup ] && exec /etc/vnc/xstartup
[ -r $HOME/.Xresources ] && xrdp $HOME/.Xresources
xsetroot -solid grey
vncconfig -iconic &
xterm -geometry 80x24+10+10 -ls -title "$VNCDESKTOP Desktop" &
kde &
```

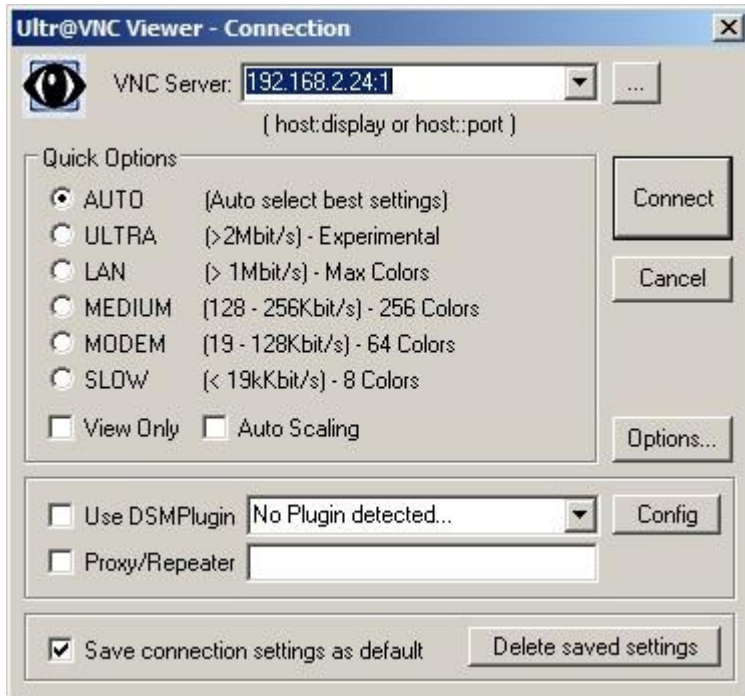
10. Save the file
11. Stop VNCSEVER by typing `vncserver -kill :1` and then tap the ENTER key
12. Now type `vncserver` and then tap the ENTER key.

NOTE it is not recommended you run `vncserver` all of the time on PBX in a Flash. This is due to high CPU demands and security considerations.

RUNNING THE VNC CLIENT

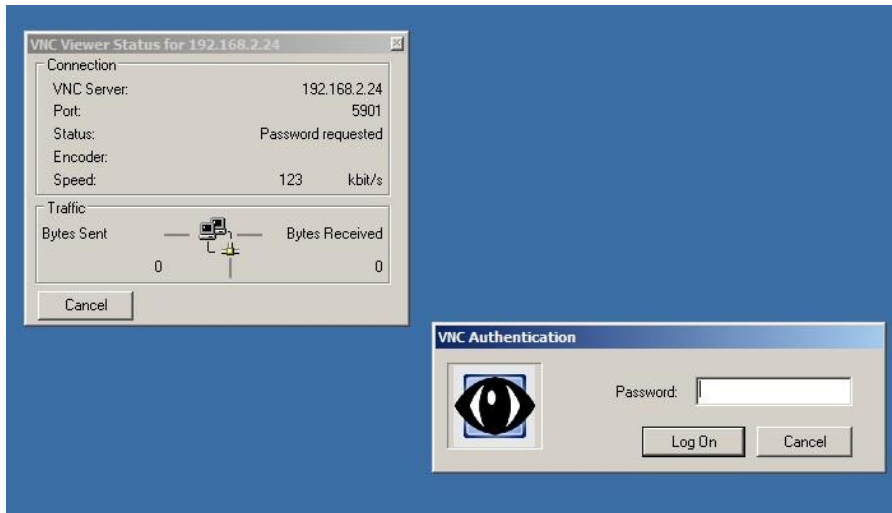
It is assumed you successfully installed the VNC client onto your second computer. Below is an example of ULTRAVNC client running on an XP Desktop

1. On your XP desktop locate the ULTRAVNC Icon and Double Left click on it with your mouse.
2. A new window will open up similar to the one below.

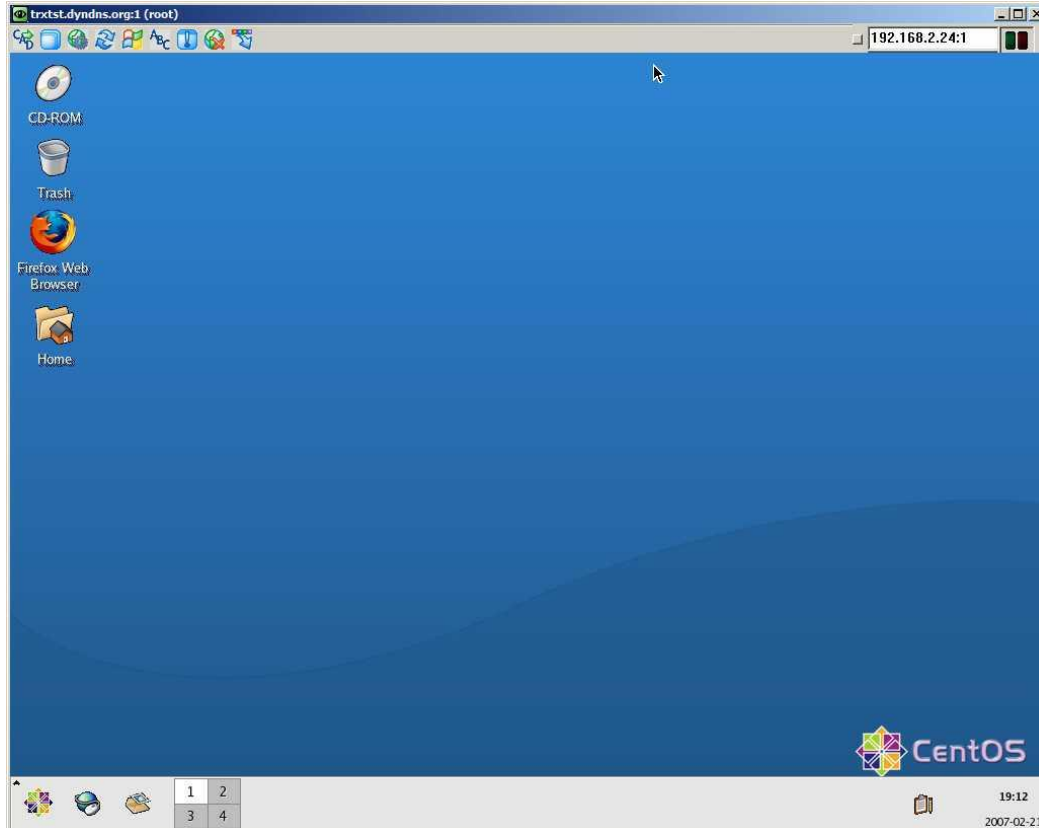


Notice the VCN SERVER address that is highlighted in blue. This will vary on your system! However after the .24 in the picture notice the :1 , it is essential you remember to add this or the VNC client will not connect.

3. After a brief pause a new window will open asking you for your password. This is the same password you enter when you were setting up the VNCSERVER earlier. Enter this password in the box and single left click on the Log On Button



4. A new window will open and you will see you remote Xwindows/KDE desktop



UNLOADING THE VNC SERVER

When you have finished using VNC you should disable the VNC SERVER. This is accomplished by logging onto your LINUX CLI and typing `vncserver -kill :1` and the tapping the ENTER key.